

**BE THE TOP
IN THE INDUSTRY**

by providing the best value-creating products

COMPANY PROFILE



2019

❖ History / Company Organization / Location

1. Global Presence

2. Major Customers

3. Biz Portfolio & Sales Volume Trend

4. Product Ranges (Construction Equipment / Automobiles)

5. Quality Trend & Certifications

6. Manufacturing Equipment

7. Inspection & Analysis Equipment

8. Plant Layout

1987~2000

Jan. 1987

Founded as
BANG-WON METAL

Dec. 1993

1st grade of Plant
Quality Control
Awarded

Aug. 1999

ISO 9002
Certification

Sep. 1999

G.L Certification

Jan. 2000

Corporation
Changed it's name
to SINIL Corp.

Dec. 2000

QS 9000
Certification

2003~2008

May. 2003

Certification of
SQ (By Hyundai
Motors)

Nov. 2004

ISO/TS 16949,
ISO 14001
OHSAS 18001

Aug. 2006

Certificated the patent
for hot forging
process using
separated die

Nov. 2007

Re-New
Certifications
ISO/TS 16949, ISO
14001, OHSAS 18001

Jul. 2008

Established
R&D Center

2010-2013

FEB.2010

Awarded as
"Best Supplier"
From Volvo Korea

Jan. 2011

Established
Busan M/S

Jan. 2011

Obtained a patent
for Yoke Shaft

Apr. 2011.~ Sep.2012

Installed Robot Arm on
7.5 Inch/ 4,500 & 3,500

May. 2012

Registration as
a new supplier
for Caterpillar

Aug. 2013

Installed 4,000 Ton
Forging Press

2015~Present

May. 2015

Awarded as
"Best Quality
Supplier"
of Volvo Korea

Jul. 2016

Awarded as
"Silver Level" of
Caterpillar SQEP

Aug. 2017

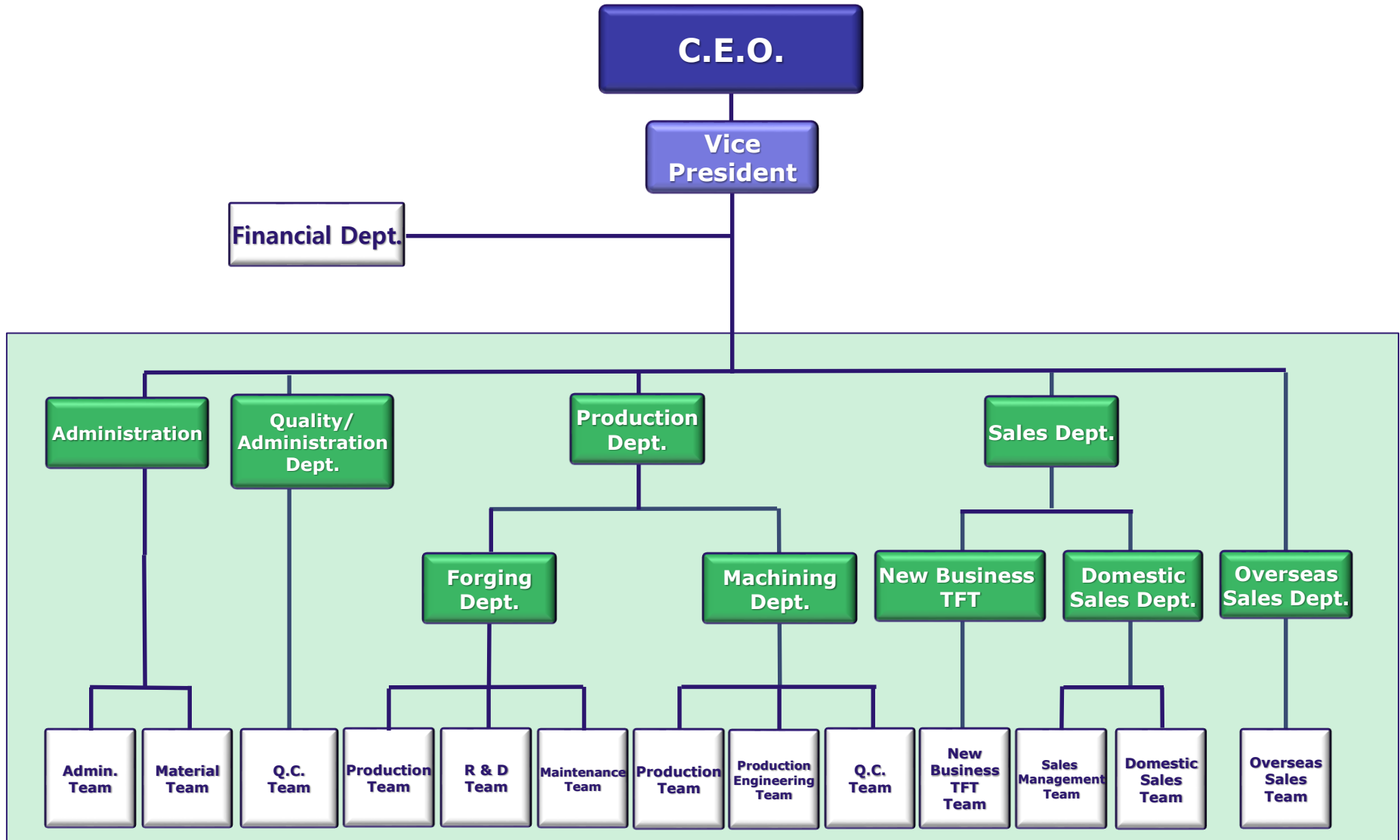
Awarded as
"Platinum Level" of
Caterpillar SQEP

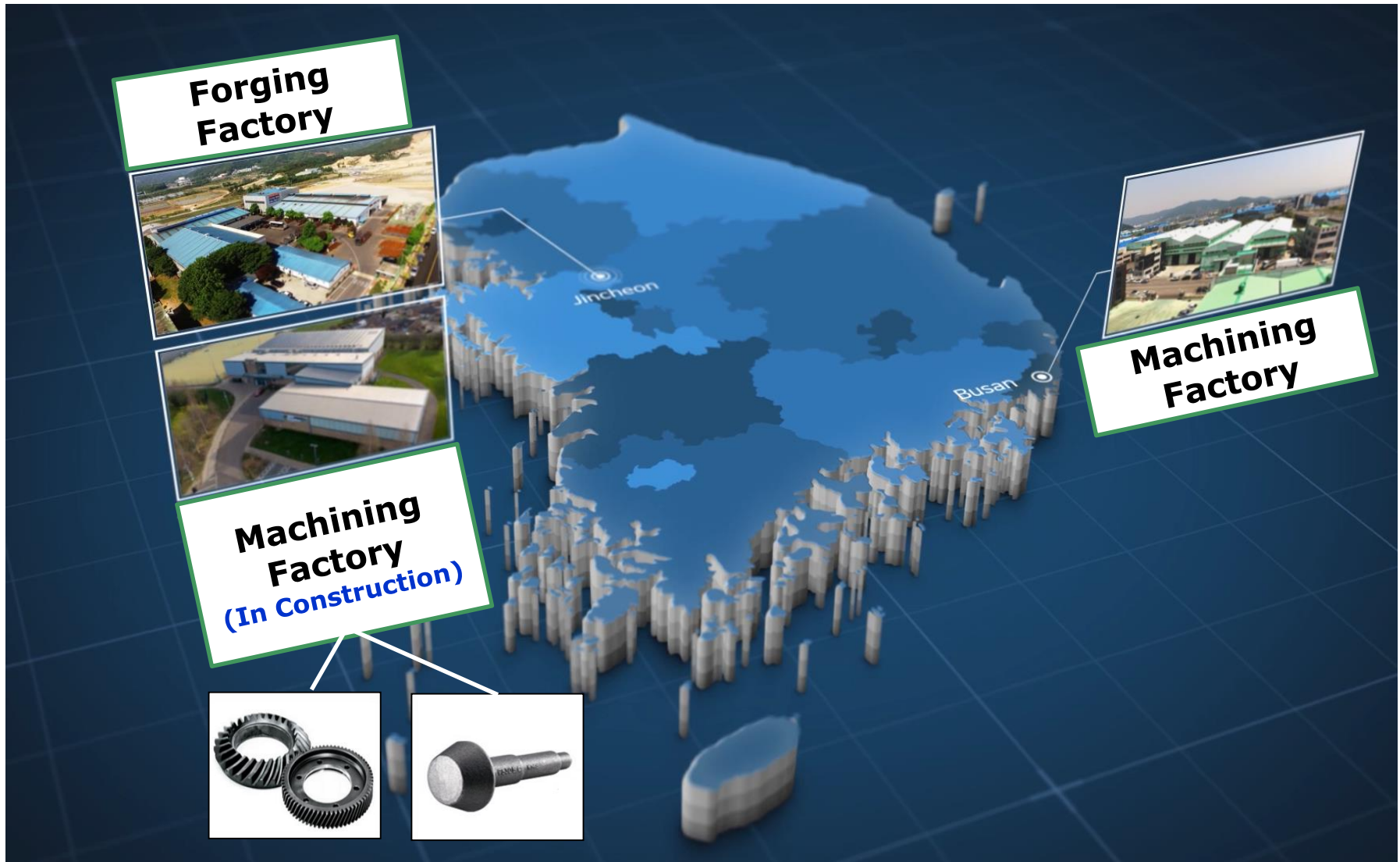
Aug. 2018

Awarded as
"Platinum Level" of
Caterpillar SQEP

Aug. 2019

Awarded as
"Platinum Level" of
Caterpillar SQEP





1. Global Presence

* U.S.A. : Caterpillar / Swanson Industries / T.M.I / Doosan Bobcat



Over 30years of Experience

2. Major Customers









Overseas



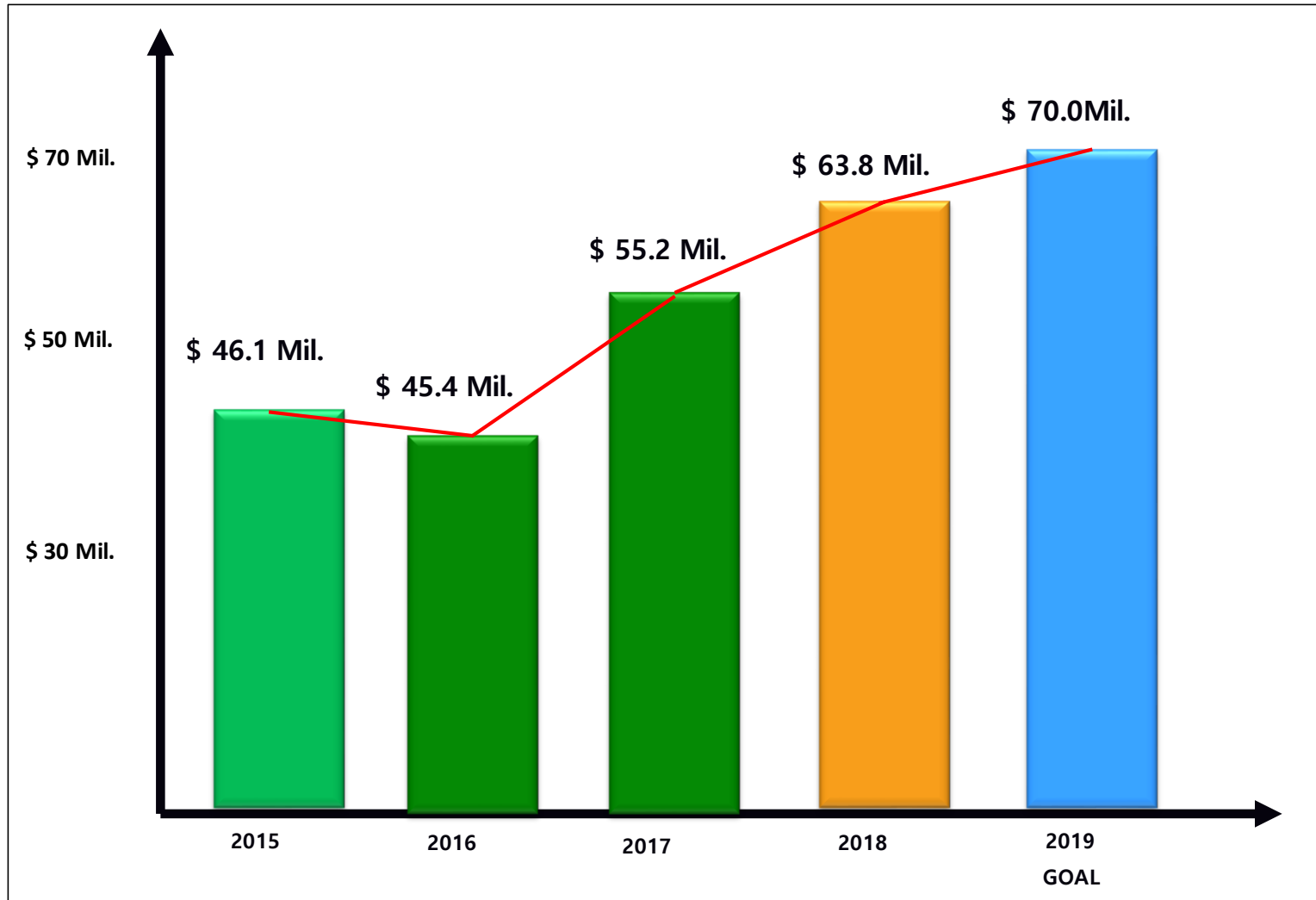
Domestic

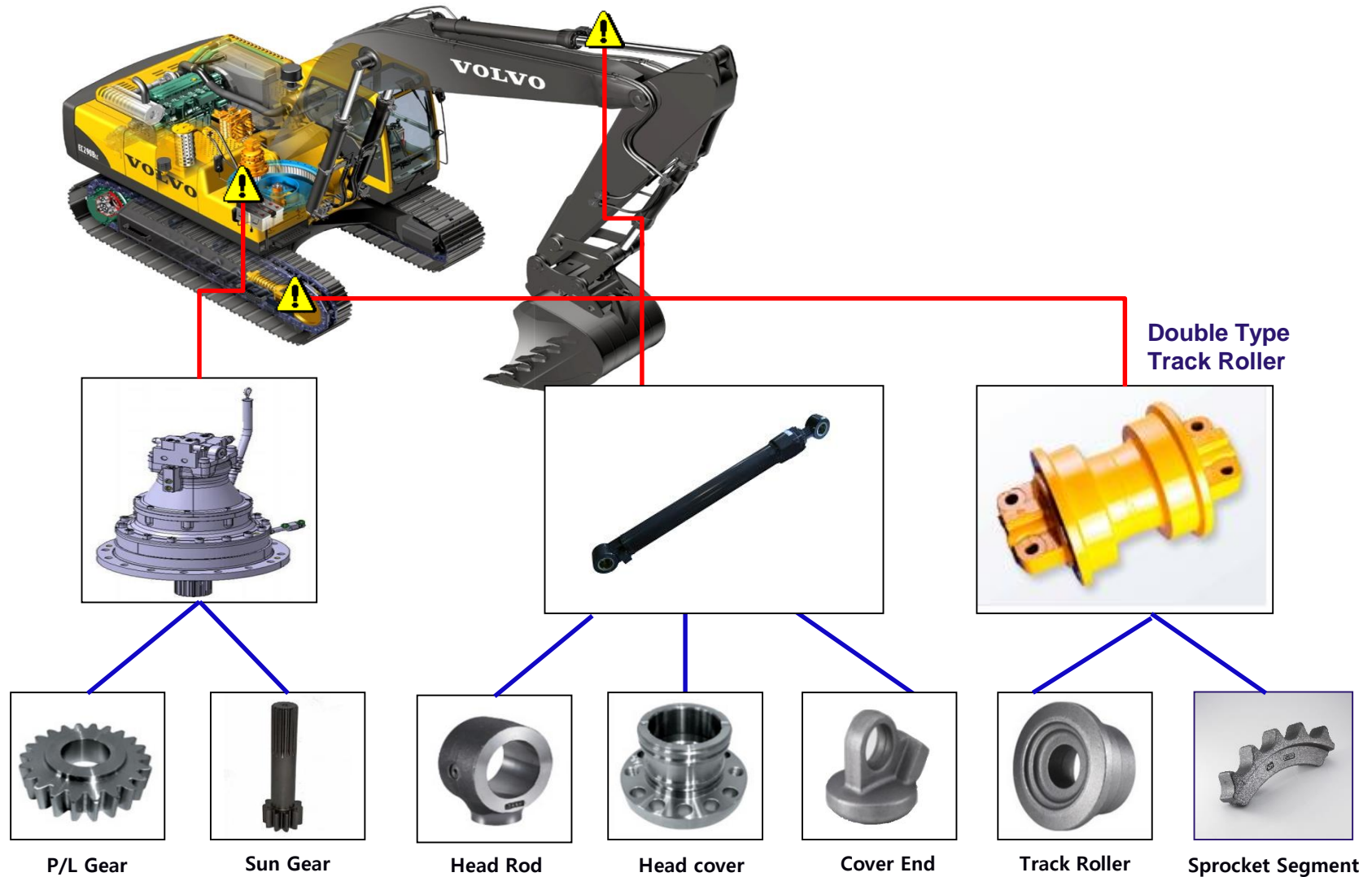


3. Biz Portfolio & Sales Volume Trend

Customer	2018 Sales (USD)	Portion	Market & Area	Main Items
 JINSUNG T.E.C.	18.9 Mil.	29.6%	- Doosan Infracore, Caterpillar, Hitachi - Oversea: Japan, Europe, U.S.A.	Track Roller Idlers Shaft
	12.1 Mil.	18.9%	- Hyundai Motors, Kia Motors Ssangyong Motors, Hyundai Commercial Vehicles	Drive Pinion, Ring Gear Rear Axle Shaft
	4.5 Mil.	7.1%	- Oversea: China, Europe	Hydraulic Parts Drum, P/L Gear
	2.8 Mil.	4.5%	- Volvo Construction Equipment	Yoke, Cover End, Head Rod Head Cover, Flange
	2.7 Mil.	4.3%	-Oversea: Komatsu (Indonesia)	Roller
	1.1 Mil.	1.7%	-Sumter / Wuxi (CCMC) / TBU (KK)	Eye / Cap Clevis Sun gears
Other Tier1 & Tier2	21.7 Mil.	33.9 %	- Hyundai/Kia Motors, Caterpillar Tier1 Volvo Tier 1, Doosan Tier1	Rollers, Eye, Rod Sun gear
Total	63.8 Mil.	100%		

3. Biz Portfolio & Sales Volume Trend





Weight Range 2Kg ~ 45Kg



Cover End



Head Cover



Flange



Flange



Head Cover



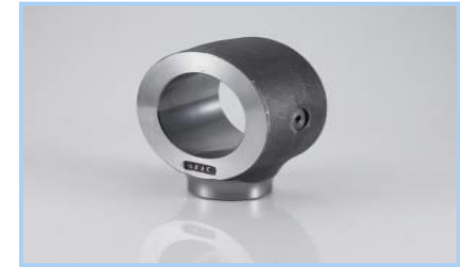
Cover End



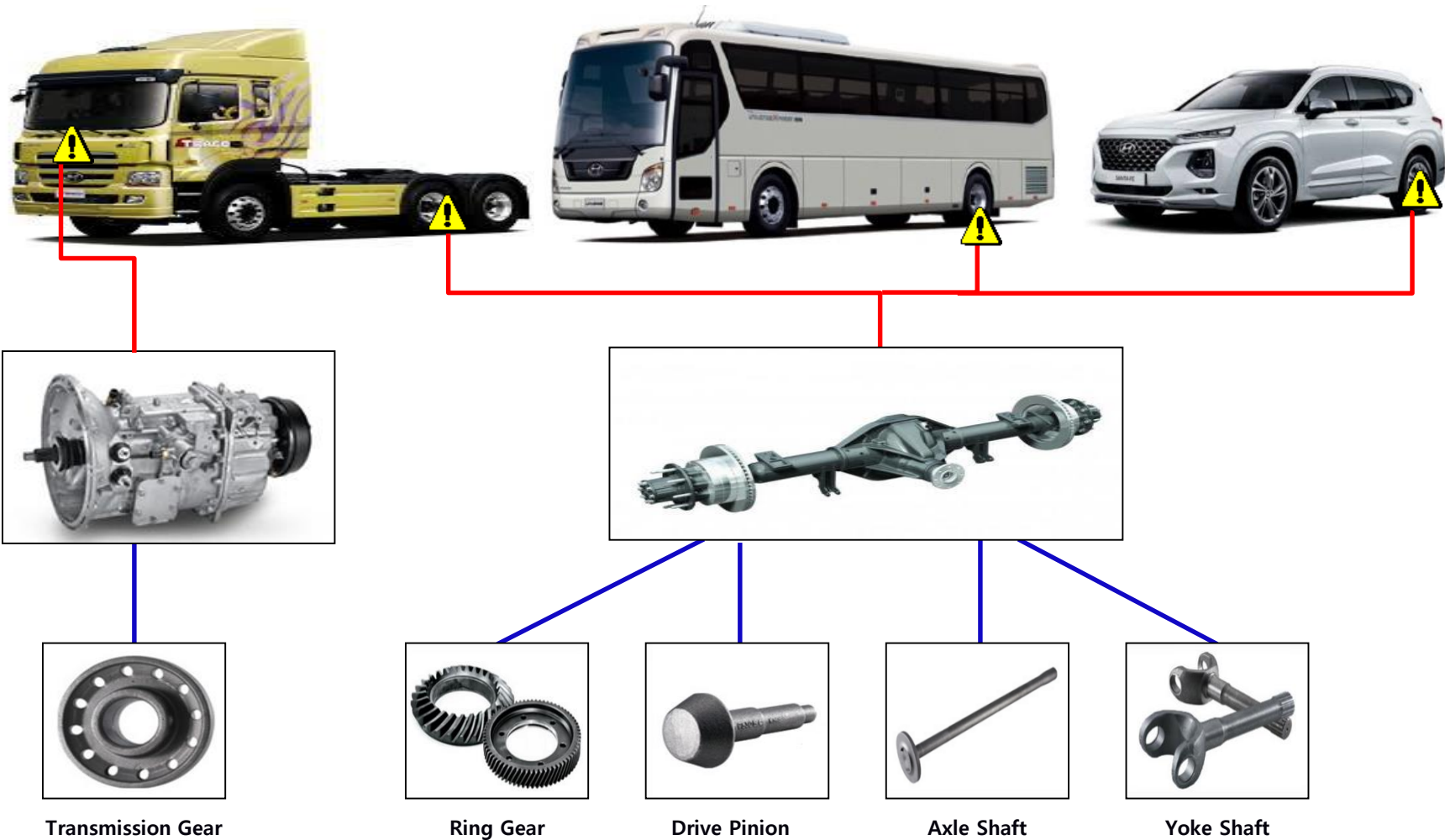
Flange



Piston

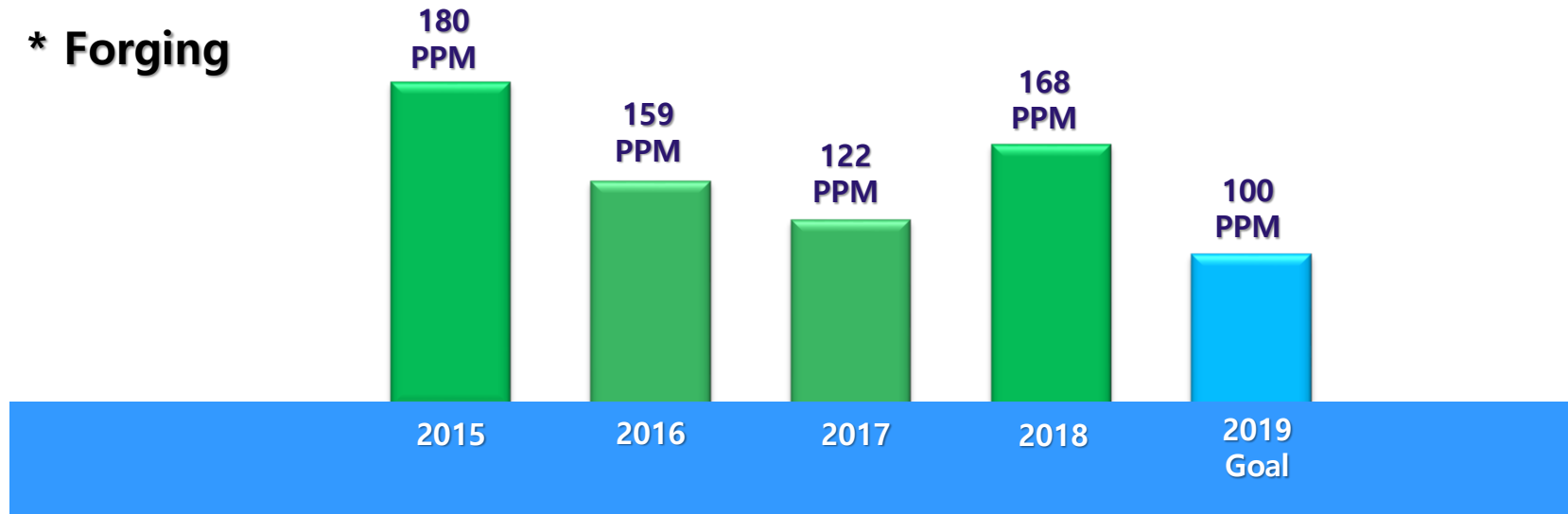


Eye / Rod Eye

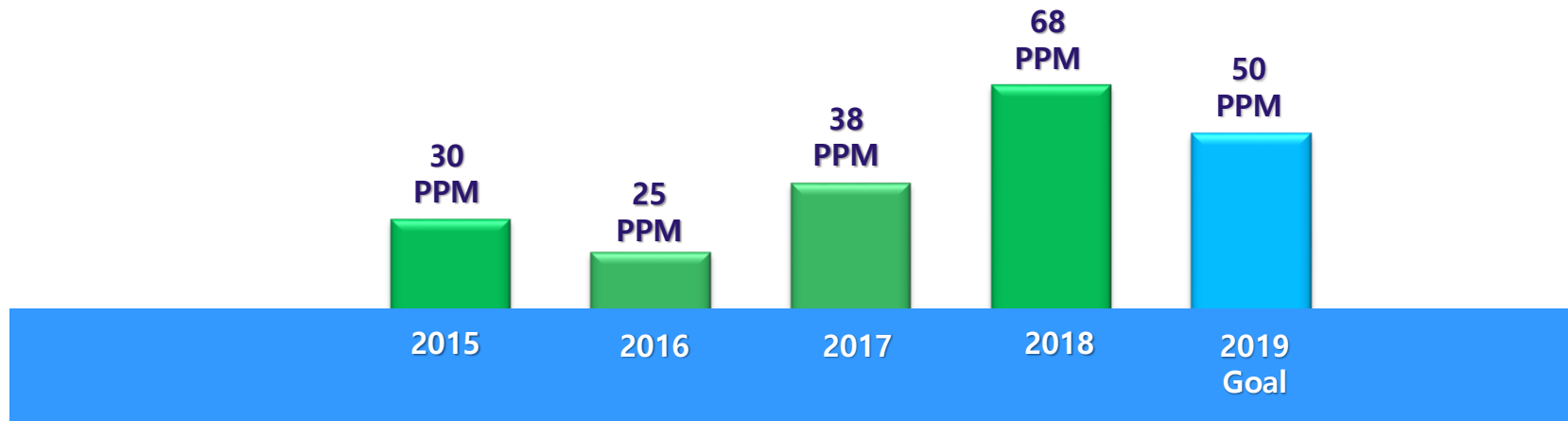


5. Quality Trend & Certifications

* Forging



* Machining



IATF 16949 FORGING



IATF 16949 MACHINING



OHSAS 18001




ISO 14001



Hyundai Motors SQ "S" Level

HYUNDAI DYMOS READY10			
등급 인증서			
업종명 : 산업			
글로벌 부품제거 브랜드까지 확보, 구매부품 품질 경쟁력향상을 위한 2017년 협력사 등급평가(2016년 11월~2017년 10월) 결과를 확인하십시오.			
S 등급 (90.1 점)			
품질경영체계 평가점수	:	39.6	(총점 50점)
인도 및 불합품 점수	:	16.0	(총점 16점)
시장물량 및 판매율 점수	:	24.0	(총점 24점)
품질경영 점수	:	8.5	(총점 10점)
인생태계 및 사회적	:	2.0	
현대다이모스 주식회사 구매본부장 전무 박영수			

CAT. SQEP Platinum Level



Supplier Quality Excellence Process

Presented in recognition of achieving Caterpillar Quality Management System supplier certification.

Through demonstrated results, this supplier has exhibited excellent process control, has shown a desire for ongoing continuous improvement, and has provided quality product to their Caterpillar customers.

Sinil Co., Ltd
Jincheon, KR
Cylinder Components
Certification Award Date - June, 2015

JUL 2016 BRONZE

JUL 2016 SILVER

AUG 2017 PLATINUM

JUL 2018 PLATINUM

Customer Certifications

Forging

1300, 1600, 2500, 3500,
4000, 4500 Tons
6 Lines of Mechanical Forging Press

5 inch / 7.5 inch
2 Lines of Upsetter

Forging Press



Upsetter



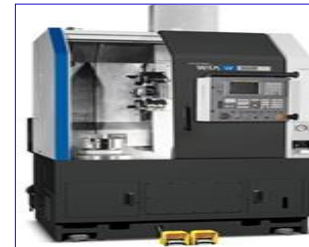
Machining

Multi-Task Machine	1 ea
Machining Center	7 ea
4 Axis CNC Lathe	2 ea
CNC Lathe	14 ea

Multi-Task Machine



CNC Lathe



MCT





C.M.M



Profile Measurer

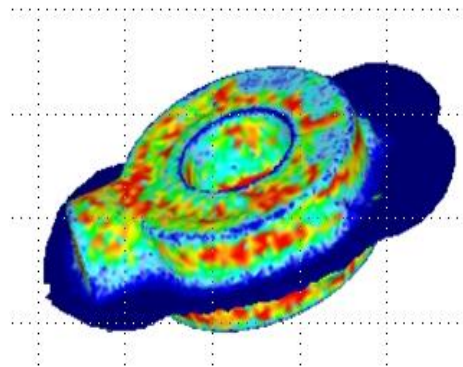


MPI

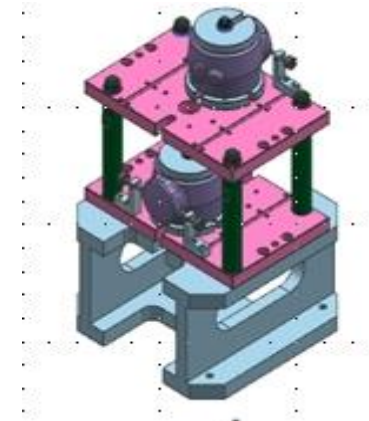


Universal Tester
(Tensile, Yield strength)

**Design & Analysis
Software**



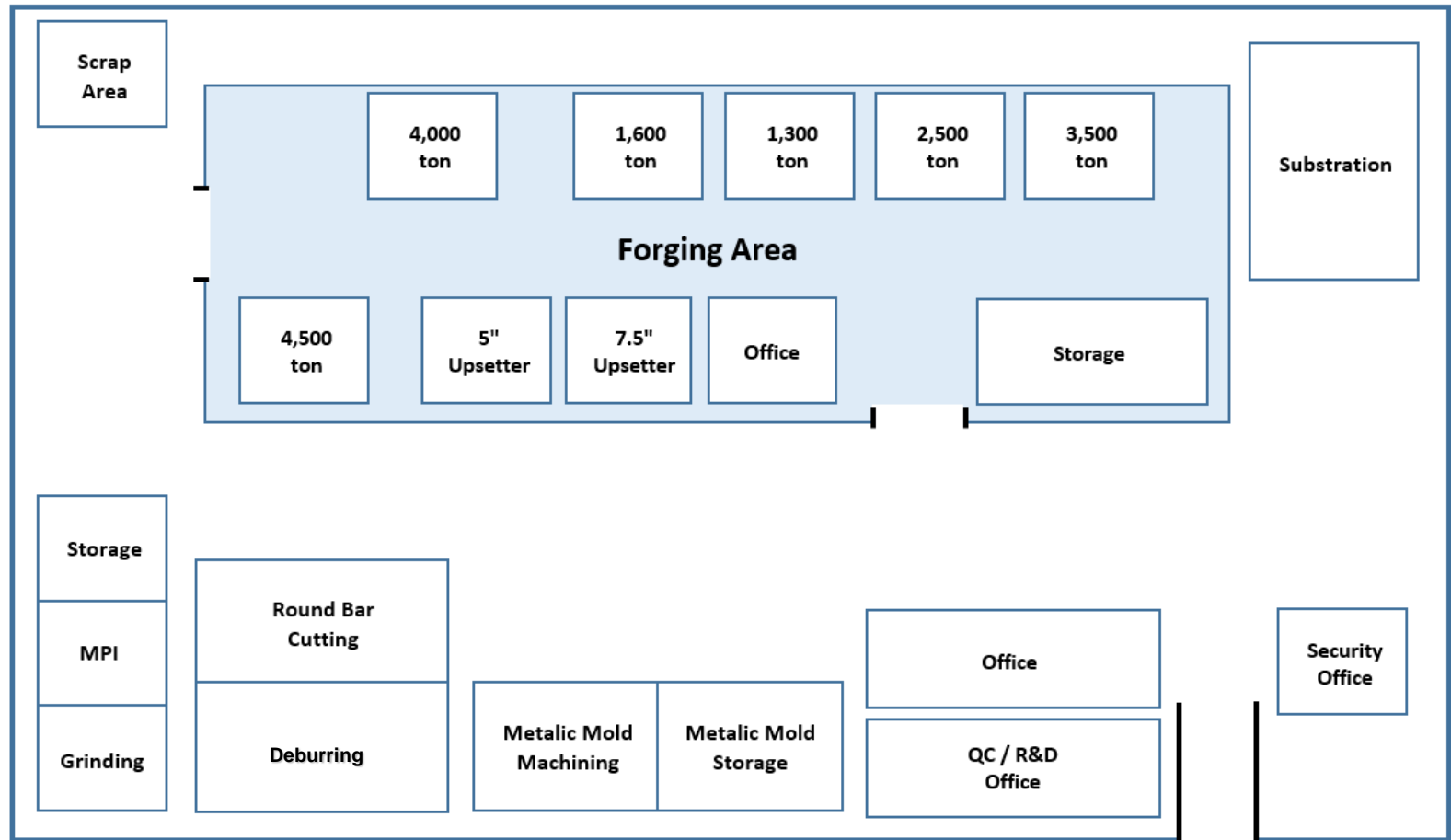
Deform – Forging Simulation



NX UG – Machining Design & Simulation

8. Plant Layout

Jincheon Plant (Forging)

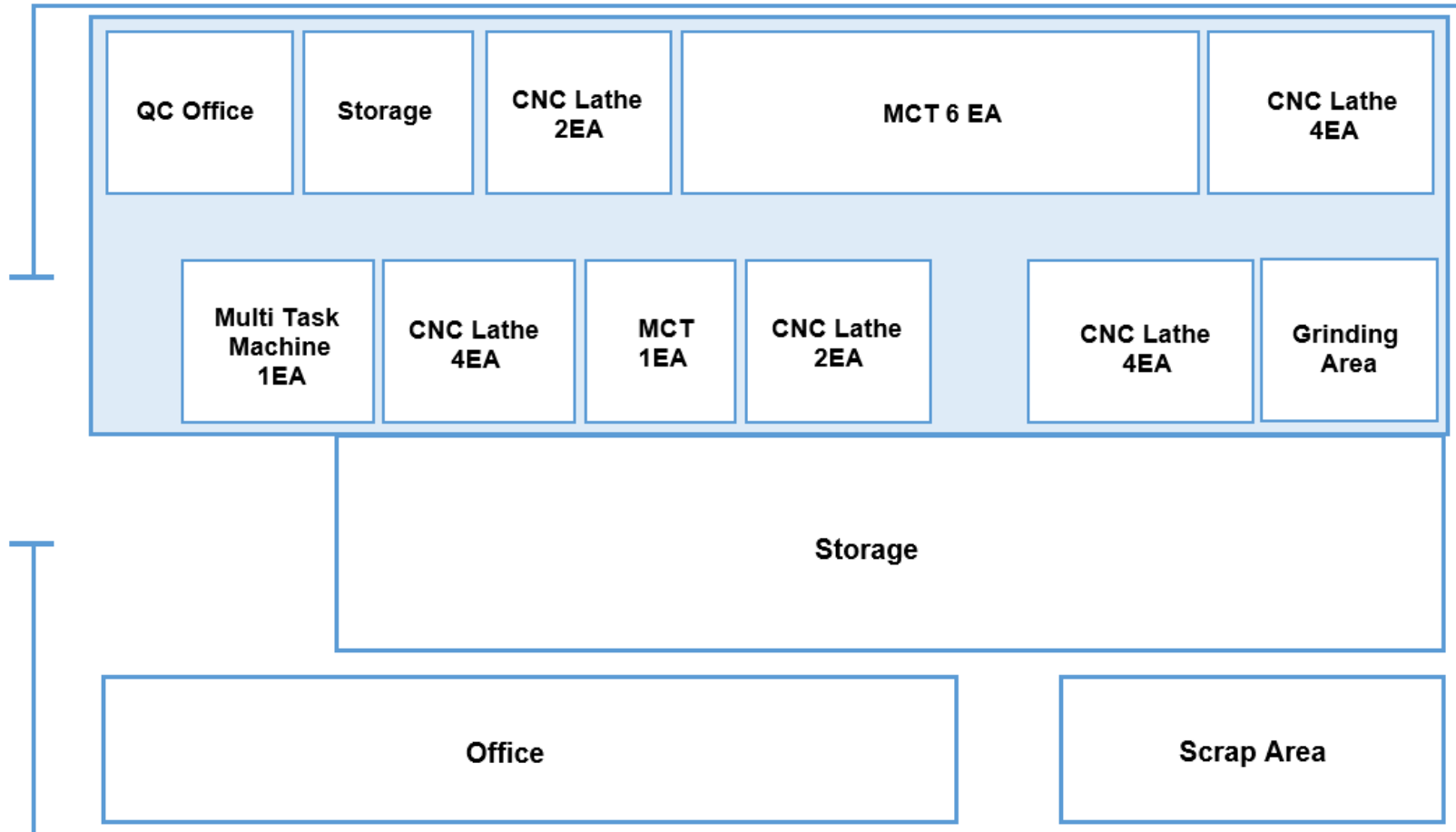


Jincheon Plant : 23,100m²

Extension Area for Machining : 10,000m² (Green Field)

8. Plant Layout

Busan Plant (Machining)



Busan Plant 3,100m²



Thank You !